

### Kamakura Station East Exit Bus Terminal Information

No.	Major Sites Along the Line	Final Destination
1	Hasedera, Kotokuin (Great Buddha) ※Daibutsumae	Fujisawa Sta., Kiyoyama
2	Tsurugaoka Hachimangu, Kenchoji, Kitakamakura ※Kitakamakura Sta.	Ofuna Sta., Kamiooka Sta., Hongodai Sta.
3	Hasedera, Yuihama, Inamuragasaki	Shichirigahama
4	Nago, Choshijoji ※Nago	Zushi-Hayama Sta., Midorigaoka Iriguchi
5	Tsurugaoka Hachimangu, Jomyoji, Hokokuji ※Jomyoji	Kamakurajoen Seimonmae Tachirai, Kanazawa-Hakkei Sta., Hairando (round)
6	Tsurugaoka Hachimangu, Egara Tenjinsha, Kamakuragu ※Daitonomiya	Daitonomiya
7	Hasedera, Kotokuin (Great Buddha) ※Daibutsumae	Daibutsumae, Kajiwara, Kamakurayama, Suwayama, Enoshima, Ofuna Sta.
8	Kuhonji	Kuhonji (round)
9	Kuhonji, Zaimokuza, Komyoji	Zushi-Hayama Sta., Kotsubo

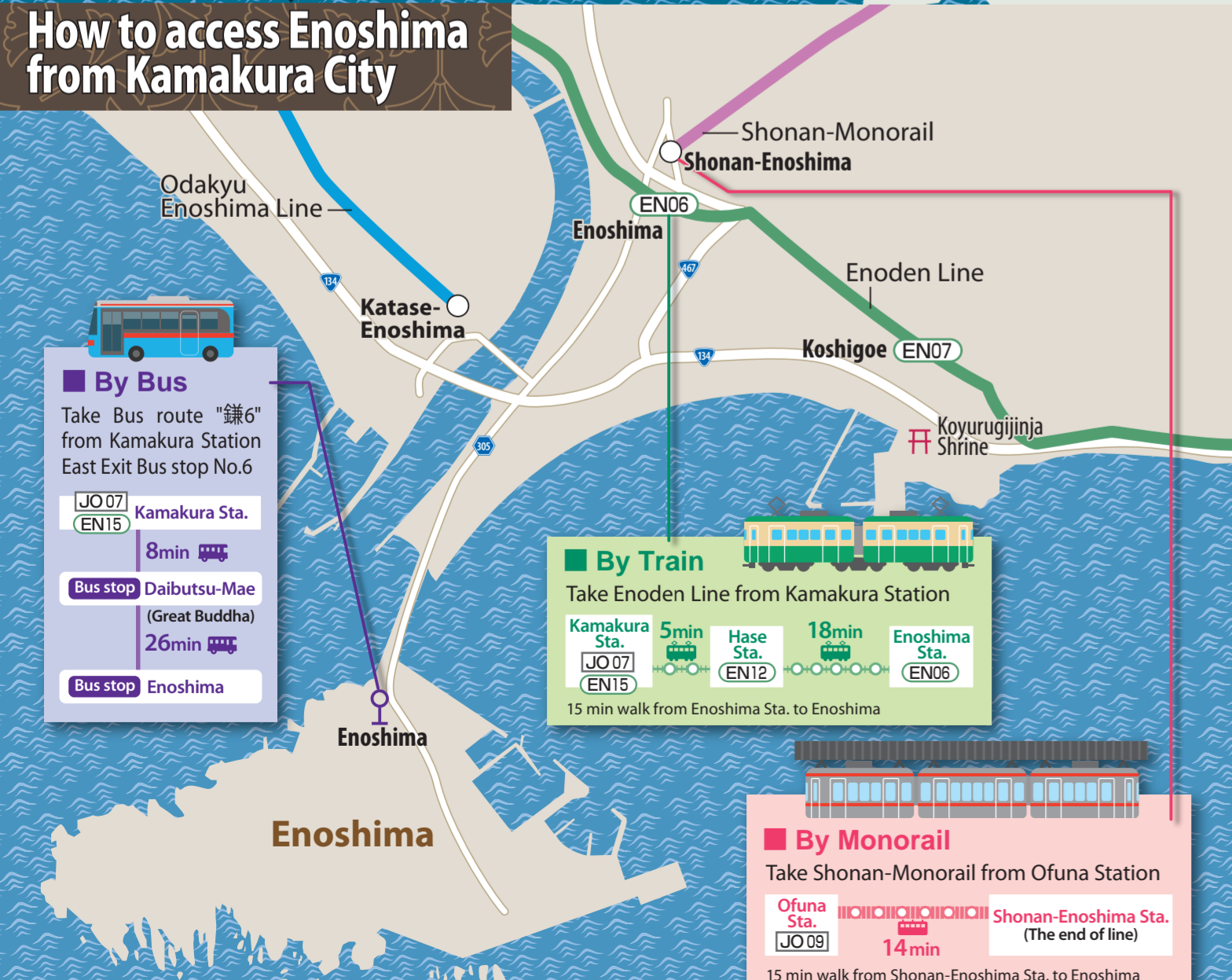
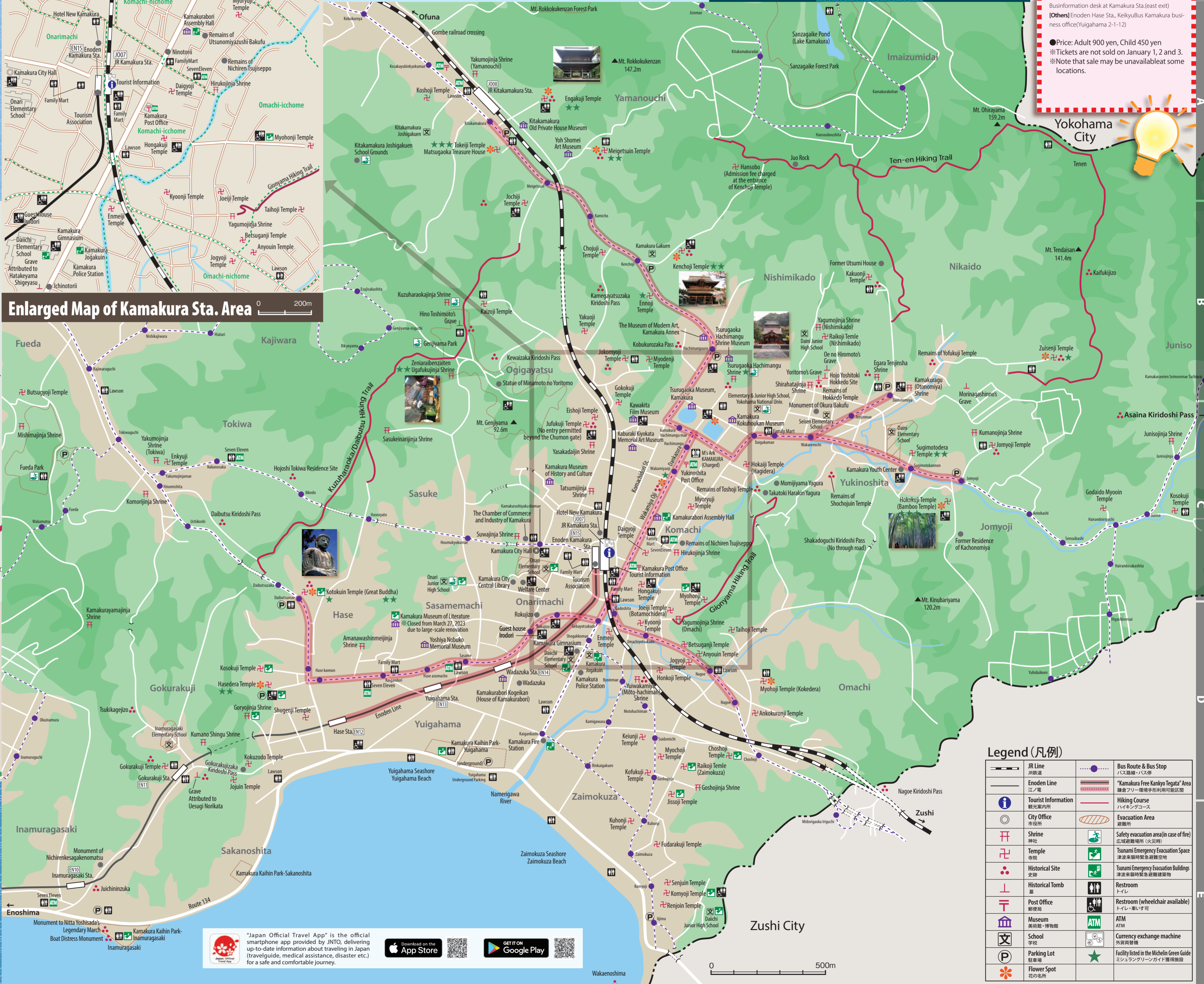
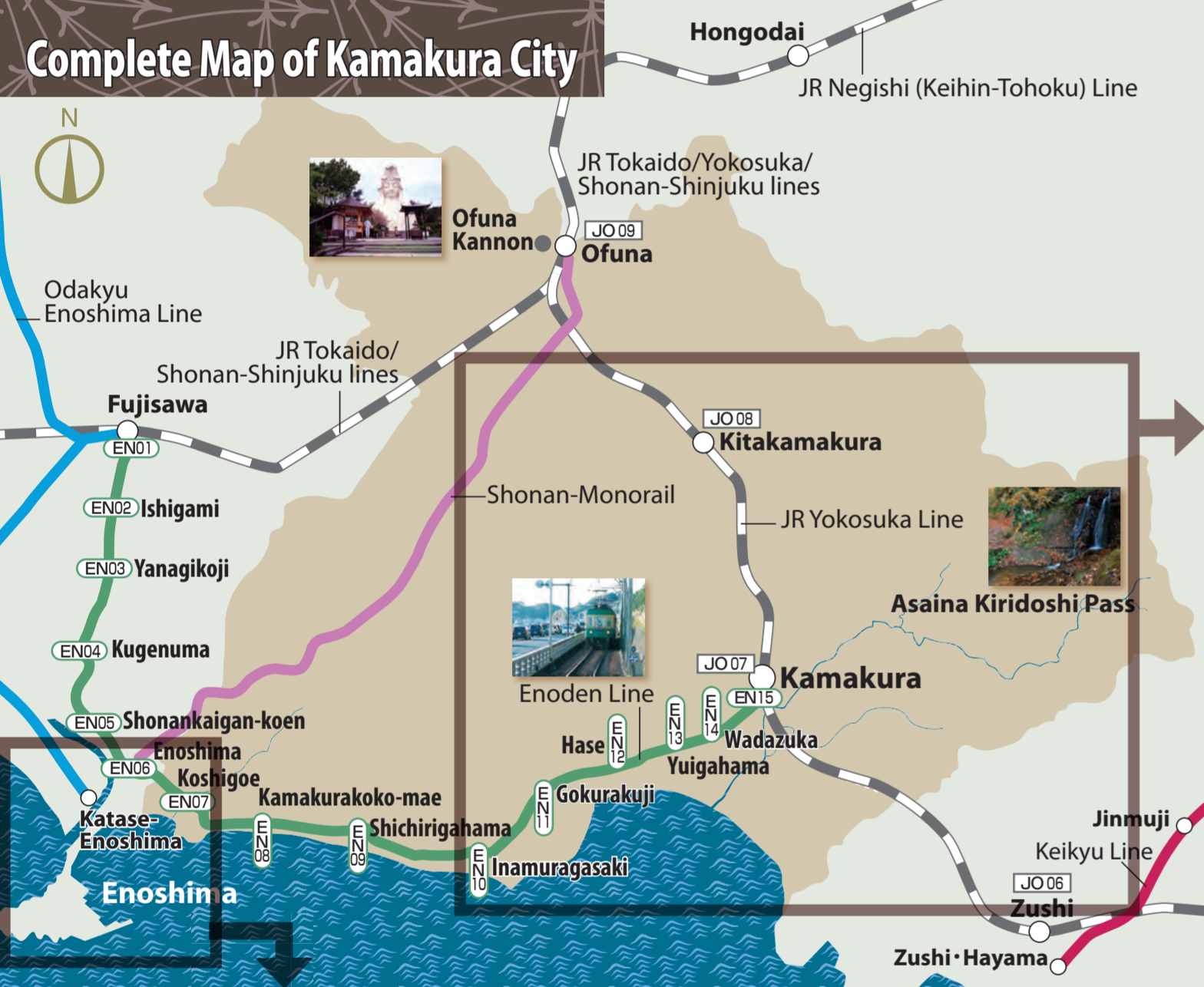
※ is the final stop of the available area of "Kamakura Kanyo Free Tegata". Please confirm the nearest stop to your destination on the maps.



### Kamakura Free Kanyo Tegata is a special pass very useful for traveling around Kamakura.

This pass allows you to ride as much as you like within a defined area on five bus and train lines that run through the most famous tourist attractions of Kamakura. You will also be able to receive discounts from participating shrines, temples, and museums, and special service from participating stores in the area.

- **Pass Available Area**  
Travel along the pink-colored routes on the map.
- **Sales Places**  
[Around Kamakura Sta.] EnodenKamakura Sta., Keikyū Bus Information desk at Kamakura Sta. (east exit)  
[Others] Enoden Hase Sta., Keikyū Bus Kamakura business office (Yuihama 2-1-12)
- **Price: Adult 900 yen, Child 450 yen**  
※ Tickets are not sold on January 1, 2 and 3.  
※ Note that sale may be unavailable at some locations.



### Legend (凡例)

JR Line 京浜東北線	Bus Route & Bus Stop バス路線・バス停
Enoden Line 江ノ電	"Kamakura Free Kanyo Tegata" Area 鎌倉フリー乗換手形利用可能区域
Tourist Information 観光案内所	Hiking Course ハイキングコース
City Office 市役所	Evacuation Area 避難所
Shrine 神社	Safety evacuation area (in case of fire) 広域避難場所 (火災時)
Temple 寺院	Tsunami Emergency Evacuation Space 津波来襲時緊急避難空間
Historical Site 史跡	Tsunami Emergency Evacuation Buildings 津波来襲時緊急避難建物
Historical Tomb 史跡	Restroom トイレ
Post Office 郵便局	Restroom (wheelchair available) トイレ(車いす可)
Museum 美術館・博物館	ATM
School 学校	ATM
Parking Lot 駐車場	Currency exchange machine 外貨両替機
Flower Spot 花の名所	Facility listed in the Michelin Green Guide ミシュラングリーンガイド掲載施設

"Japan Official Travel App" is the official smartphone app provided by JNTO, delivering up-to-date information about traveling in Japan (travel guide, medical assistance, disaster etc.) for a safe and comfortable journey.

Download on the App Store | GET IT ON Google Play



# Model Route

on foot by train by bus

## Popular Recommended Route

- Kamakura Sta.(East) - (via Komachidori St.) - Tsurugaoka Hachimangu Shrine - Kenchoji Temple - Engakuji Temple - Kitakamakura Sta.
- Kamakura Sta.(West) - Enoden - Hasedera Temple - Kotokuin Temple (Great Buddha) - Gokurakuji Temple - Enoden - Kamakura Sta. - Bus - Hokokuji Temple - Zuisenji Temple - Bus - Kamakura Sta.(East)



## History of Kamakura

Kamakura is an ancient city that has produced its own, original culture. Once it was a political capital along with Nara and Kyoto, and also the birthplace of Japan's first military government, the "Kamakura Bakufu," Warrior Minamoto no Yoritomo was appointed as Sei-i Taishogun (shogun) by the Imperial Court in 1192 and established the Kamakura Bakufu government, which is the first military government in Japan, whereas previously the Imperial Court in Kyoto held power.

After Yoritomo's death, the Hojo clan governed this area. Trade with the Sung and Yuan dynasties of China prospered in the 13<sup>th</sup> century and a various aspects of Chinese culture, including Zen (Buddhism), Zen-style architecture, Buddhist statues, and Chinese lacquer ware, were imported.

The Kamakura Bakufu ended in 1333. But the military culture of that era, in which the simple and strong spirit of warriors, traditional aristocratic culture, and Chinese Sung and Yuan culture were blended, has continued to greatly influence Japanese society down to the present day.

Kamakura began flourishing as a temple town in the 17<sup>th</sup> century. From the 19<sup>th</sup> century, it became popular for beaches, resort areas, and residential districts.

Kawabata Yasunari, a writer who was awarded the Nobel Prize for Literature, lived and wrote many works in Kamakura. Blessed with the nature of the ocean and surrounding green hills, Kamakura today attracts a large number of tourists.

### Military Culture of Kamakura

Samurai, or warriors, in Kamakura daily refined their martial skills to prepare to go to battle whenever necessary. Military culture-related goods, such as finely wrought armor, excellent swords, and scroll paintings depicting war, were brought to Kamakura from across the country. *Yabusame*, a ritual in which a person dynamically shoots three arrows while riding a galloping horse, also originated here. Nowadays, *Yabusame* is held at Tsurugaoka Hachimangu Shrine on the final day of Kamakura Festival in April and on September 16 every year.



## Tsurugaoka Hachimangu Shrine 鶴岡八幡宮

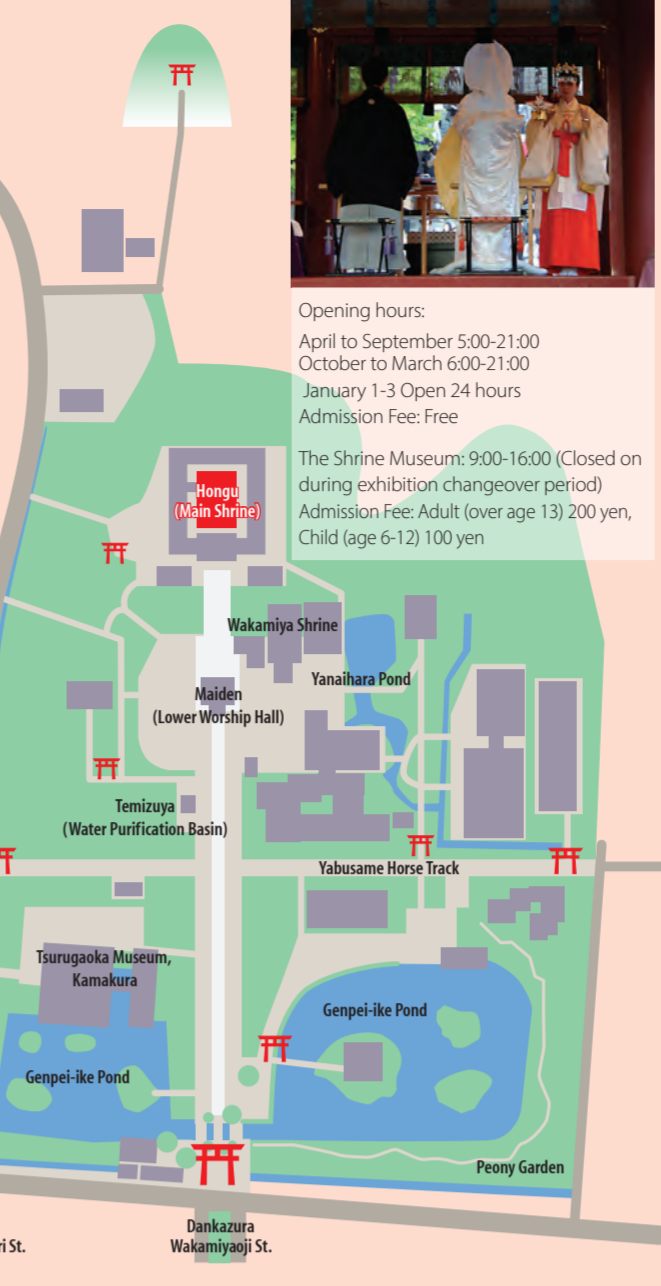
The shrine was originally founded in Zaimokuza in 1063 by Minamoto Yoriyoshi to be dedicated to Hachiman kami, the guardian deity of the Genji (Minamoto) clan. In 1180, the descendant Minamoto Yoritomo moved the shrine to its present site. In 1191, he set the shrine as the center of the Kamakura Shogunate (Government of Kamakura), and also modeled it into the present arrangement-the Hongu (Main Shrine) on the top of the stone steps and the Wakamiya Shrine at the bottom of it.

**Dankazura**  
Sando, or the formal approach to the shrine. In the spring, it is lined with cherry blossoms and makes beautiful scenery.

**Peony Garden**  
The peonies in the shrine garden are at their best from January to February (winter peony) and from April to May (spring peony).  
Admission Fee: Adult 500 yen, Student (age 13-18) 200 yen, Child (under 12) free

**Genpei-ike Pond**  
The ponds are adorned with cherry blossoms in spring and with red and white lotus flowers in summer.

**★ Nationally Important Cultural Property**  
URL : <https://www.hachimangu.or.jp/en/>



## Kotokuin Temple (Great Buddha) 高德院(大仏)

The Great Buddha at Kotokuin is known as Kamakura Daibutsu. The height is 11.31 meters (13.35 meters including the base) and the weight is about 121 tons. The construction of the bronze statue of Buddha as it appears today dates from 1252. Kamakura Daibutsu is the only statue of Buddha in Kamakura that is designated as a national treasure. The whole statue was gilded and placed inside of Daibutsu-den or the great Buddha hall when it was completed. It is now an outdoor Daibutsu because the Daibutsu-den building was destroyed by earthquakes and tsunamis.

April to September 8:00-17:30  
October to March 8:00-17:00  
Adult (age 13 and older) 300 yen, age 6-12 150 yen

### Access [Bus]

Take Enoshima Dentetsu Bus at Bay 1, or Keihin Kyuko Bus at Bay 6 at the East Exit of Kamakura Sta. Get off at Daibutsu-mae stop. [Enoden]  
Take the train at Enoshima Dentetsu Kamakura Sta. and get off at the third station "Hasec." About 7 minutes walk from the station.

## Rules and Manners of Japan

- About taking photos**  
Do not obstruct vehicles. Do not take photos in dangerous locations.
- Tight and crowded locations**  
Take care when passing other people. Consider your surroundings when eating and drinking. Do not ride a bicycle, scooter or motorcycle in such locations.
- Other**  
Do not deviate from designated pathways. Do not use fire in proximity to flammable materials.

## Hiking Route

Kamakura Sta.(East) - Tsurugaoka Hachimangu Shrine - Hokokuji Temple - Tenen Hiking Trail (Zuisenji entrance) - Kenchoji Temple - Jochiji Temple - Daibutsu Hiking Trail - Zeniaribenzaiten Shrine - Daibutsu Hiking Trail - Kotokuin Temple (Great Buddha) - Hasedera Temple - Enoden - Kamakura Sta.(West)

## Shrines and Temples

- Engakuji Temple 円覚寺 A3**  
Engakuji was founded in 1282. The Bell and Shari-den Hall are national treasures.
- Zuisenji Temple 瑞泉寺 B5**  
This temple is famous for its beautiful garden with flowers.
- Kenchoji Temple 建長寺 B3**  
The first Zen temple in Japan. Zazen meditation session is held from 17:00 to 18:00 on Fridays and Saturdays.
- Gokurakuji Temple 極楽寺 D1**  
Gokurakuji is an idyllic and peaceful ancient temple. It is a famous location for narcissus, plum and cherry trees where many people visit from early spring through the spring season.
- Hokokuji Temple 報国寺 C4**  
A traditional tea ceremony is held in a beautiful bamboo grove. You can enjoy *matcha* green tea while admiring the beautiful bamboo trees. 9:00-16:00  
Bamboo garden: 300 yen, Matcha green tea: 600 yen.
- Egara Tenjinsha Shrine 笹柄神社 B4**  
Egara Tenjinsha shrine is a Japanese native shrine which enshrines the spirit of Duke Sugawara no Michizane, the famous scholar, poet and political figure, who is worshipped as the god of learning.
- Zeniaribenzaiten Ugafukujinja Shrine 銭洗弁財天宇賀福金君 Shrine B2**  
The waters of a spring in its cave are said to be able to multiply the money washed in them.

## Experience Japanese Traditional Culture

- Zazen Meditation**  
Lateness and talking are strictly forbidden. An extra charge may be applied besides the admission fee to the temple.  
**Engakuji Temple 円覚寺 A3**  
2<sup>nd</sup> and 4<sup>th</sup> Sundays of the month: Lecture 9:00-10:00 / Zazen 10:00-11:00  
Reservation is not necessary. Participation in the lecture is required prior to zazen session.  
Saturdays: Beginners 13:20-14:20 / From the second time 14:40-15:40
- Kenchoji Temple 建長寺 B3**  
Zazen session / Fridays and Saturdays 15:30-16:30  
Please arrive and sit 15 minutes prior to the session time.
- Hokokuji Temple 報国寺 C4**  
Sundays 7:30-10:30  
Please arrive at the main hall prior to the session time.

## Experience Kamakurabori

Kamakurabori is a craft made by carving wood and coating with layers of the urushi lacquer. This technique is known as mokucho-saishitsu. The artists first draw the patterns for decoration on the wood, mainly katsura ( Japanese Judas tree ) and engrave the patterns to create vessels and furniture. The effect of urushi coating makes the work strong and enhances its expression.

## Museums

- Kamakura Museum of History and Culture 鎌倉歴史文化交流館 C3**  
This museum, which opened in May 2017, is a place where visitors can interact, study and experience the historical and cultural heritage of Kamakura. It uses an individual house designed by the office of renowned British architect Norman Foster, and it presents mainly artifacts from Kamakura as well as the history of Kamakura from prehistoric and ancient times up to the modern era. Must-see attractions include the latest video exhibits that incorporate dioramas and projection mapping, a garden that resembles the landscape of the medieval period, and the panoramic view of the sea from the hill.  
Museum Hours: 10:00-16:00 (last admission at 15:30)  
Closed: Sundays and public holidays  
Admission Fee: Adults (ages 16 and older): 300 yen, elementary / junior high school students (ages 6 to 15): 150 yen
- Kamakurabori Museum 鎌倉彫資料館 C3**  
Kamakurabori Museum introduces and promotes Kamakurabori, an 800-year-old traditional craft. You can watch video about Kamakurabori. A two-hour Kamakurabori experience session is organized (reservations needed).  
Closed: Monday and Tuesday, New Years, and other days  
\*Please contact us for details.

## Medical Treatment

- Shonan Kamakura General Hospital**  
Shonan Kamakura General Hospital is a medical institution that is specified the acceptance of international patients provides with multilingual medical supports.  
<Languages> English, Chinese, Korean, Spanish, French, and Russian  
<Inquiry> International Medical Support Center, Shonan Kamakura General Hospital, Iryochin Okinawa Tokushukai  
Address: 1370-1 Okamoto, Kamakura-City, Kanagawa  
TEL: +81 467-46-1717  
URL: <http://www.shonankamakura.or.jp/english/section/>
- AMDA International Medical Information Center**  
AMDA is an organization offering medical information to foreign residents in Japan in their native languages.  
AMDA offers telephone interpretation services free of charge.  
<http://eng.amda-imic.com/>  
telephone 03(5285)8088

## Tips for Shrines and Temples

- Shrine**  
Shrine refers to Japanese native shrine and there enshrined is a variety of deities. What is enshrined varies from shrine to shrine. Shrine called Jinja in Japan.
- Way of Praying**  
In front of the torii gate, which is the entrance of a shrine, bow one time towards the main hall. Passing through the torii, walk along one side or the other side of the approach, not in the center. → Purify yourself at the water pavilion called chozuya or temizuya. (Purify your hands and mouth with water. Don't let the ladle touch your mouth!) → Slightly bow, ring the bell, toss money into the money box, and pray in the Shinto bowing and clapping style (Nirei Nihakushu Ichirei). Bow slightly and leave. When leaving the precincts, make one bow towards the main hall and the torii.
- Chozu (Temizuyu)**  
1. Take a ladle with your right hand. 2. Take some water with the ladle. 3. Wash your left hand. 4. Take the ladle with your left hand and wash your right hand. 5. Take the ladle with your right hand, fill it with some water, and put the water in your left hand. 6. Wash your mouth with the water in your left hand. 7. After washing your left hand, place the ladle upright and rise it with water. 8. Put the ladle back in its place.
- Nirei Nihakushu Ichirei (Two bows, two claps, one bow)**  
Make two deep bows. Clap your hands twice. Make one deep bow.
- Temple**  
Temple means Buddhist temples. Temple called Otera in Japan.
- Way of Praying**  
In front of the sanmon gate, which is the entrance to the temple, join your palms together and bow to the main hall. → Silently pray in front of the main hall, without clapping. → You may go and look inside the temple if allowed and if you are interested. → When leaving, join your palms together and bow to the main hall.

- Shakyo (hand-copying a sutra)**  
**Hasedera Temple 長谷寺 D2**  
Everyday 9:00 - 13:00 last admission Fee: 1,200 yen for the shakyo paper plus admission fee to the temple  
**Komyoji Temple 光明寺 E3**  
2<sup>nd</sup> Wednesday of the month 11:00-12:00 1,500 yen

- Matcha Experience**  
You can enjoy Japanese sweets and *matcha* green tea in an informal and easy atmosphere.  
**Jomyoji Temple's Kisenan (tearoom) 浄妙寺・喜楽庵 C5**  
Matcha and sweets 600 yen / 1,000 yen  
Admission fee to the temple 100 yen 10:00-16:15  
**Hokokuji Temple (Bamboo garden) 報国寺 C4**  
600 yen for *matcha* plus 300 yen as admission fee to the garden. 9:00-16:00 (Doors close at 15:30)

## Riding the Enoden Line and the Bus

- Enoden Line**  
The Enoden (Enoshima Railway) is a railway that connects Kamakura to Enoshima and Fujisawa. - You can buy tickets at the ticket vending machine. - There are many stations without station attendants. When getting off at a station with no attendants, you may give your ticket to a nearby conductor, or put it in a used ticket box. - You may use PASMO/Suica cards.
- Bus**  
-When getting on at the front of the bus: Tell the driver your destination, and pay the amount required, or touch your PASMO/Suica card on the touch panel. -When getting on at the back of the bus: When you get on, take a numbered ticket, or touch your PASMO/Suica card on the touch panel. When getting off, check the electronic board, and pay the amount indicated for the number on your ticket. If you use PASMO/Suica, touch your PASMO/Suica card on the touch panel. - You can get up to 1,000 yen changed on the bus. - You may use PASMO/Suica cards.

- Experience**  
Saturdays (2nd or 4th)  
Sundays (1st or 3rd)  
10:00-12:00  
Minimum party size is 6 people. Please contact us to participate. Fee: Round tray adult 3,800 yen elementary / junior high school students (ages 6 to 15): 3,000 yen

- Kamakura Kokuhoukan Museum 鎌倉国宝館 C4**  
Numerous works of art representing some of the best cultural properties passed down to shrines and temples in the neighborhood and the Kamakura city area have been deposited here, where they are safeguarded and exhibited. Because a statue of the Buddha is openly displayed here, it has the atmosphere of a temple hall, where one can feel the life force of the statue, and that is one of its appeals. The exhibited items include numerous items associated with Zen culture, making this museum an unmissable destination for learning about medieval Japan. The museum celebrates the 90th anniversary of its founding in 2018, and the main building (the exhibition hall) that was constructed when the museum opened has been designated a national registered tangible cultural property.  
Museum Hours: 9:00-16:30 (last admission at 16:00)  
Closed: Mondays (the first following weekday if the Monday coincides with a public holiday), during exhibition changing periods, special periods, and year-end and New Year holidays  
Admission Fees: Vary by the exhibition

## Enjoy sightseeing hassle-free!

- Location**  
Kamakura City Tourist Association, Kamakura Station West Exit Enoden Building 4th Floor
- Hours**  
9:00 - 17:00  
Business day schedule may vary. Please check the website.
- Fee**  
S. 300 yen, M. 600 yen, L. 800 yen/piece
- Luggage pick up after 5pm will incur additional charges equivalent of another day of service. The office closes at 5:15pm.

- In Town**  
1個だけでも買えますか? Can I buy just one of them?  
ちょっと試してもいいですか? Can I try this?  
いくらですか? How much is this?  
写真をとってもらえますか? Can I take a picture here?  
トイレを使わせてください。 Let me use a restroom, please.
- At Restaurants**  
カードは使えますか? Do you accept a credit card?  
どのくらい待ちますか? How long do I have to wait?  
喫煙席を希望します。 I smoke.  
禁煙席を希望します。 I don't smoke.  
トイレはどこですか? Where is a restroom?
- 生で食べるものですか? Is this raw?  
火は通っていますか? Is this cooked by heat?  
冷たい食べ物ですか? Is this a cold dish?  
材料に何を使っていますか? What are the ingredients of this dish?  
私は宗教的な理由でアレルギーのため〇が食べられません。 I can't eat ○○ because of a religious reason/allergy.
- 温かい(熱い)食べ物ですか? Is this a warm / hot dish?  
精算してください。 Check, please.

Go straight 正面	0	1	2	3	4	卵 Egg	乳製品 Dairy products	穀類 grain	小麦 Wheat	そば Buckwheat	その他 Other	野菜 Vegetables		
Turn left 左	5	6	7	8	9	魚 Fish	まぐろ Tuna	あじ Horse mackerel	さば Mackerel	しらす Whitebait	イカ Squid	エビ Shrimp	カニ Crab	貝類 Shellfish
Turn right 右	10	100	1000	時間	分	豆 Bean	大豆 Soybean	落花生 Peanuts	他 Other	肉 Meat	牛肉 Beef	鶏肉 Chicken	豚肉 Pork	他 Other

YES NO Hour Min Please point. 指で示してください。

For bus and Enoden travel around the Kamakura area, the one day "Kamakura Free Kankyo Tegata" (one-day free pass) is a very useful and inexpensive option.

Used Ticket Box and PASMO/Suica Touch Panel